



MINISTRY OPPORTUNITY PROFILE

Lead Pastor



LONDON, ONTARIO

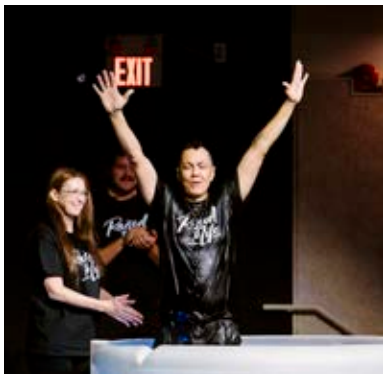
A KINGDOM OPPORTUNITY

New Hope Community Church continues to be as culturally relevant and as vibrant today as it has for the past 34 years. Located in London, the Forest City of southwestern Ontario, New Hope's excellent facility is home base to a church whose influence stretches as far away as Peru and India. People describe the environment of New Hope as a Holy Spirit honouring church with a nontraditional Pentecostal personality.

New Hope is seeking a Lead Pastor who will build upon our foundation and lead us into a vibrant future while leading us closer to God and each other.

The new Lead Pastor will work closely with the Board and the ministry staff team to design and implement a fresh strategic journey for the New Hope community.

London is a wonderful city to call home. It is home to the world class Western University, top tier healthcare and enjoys a lower cost of living than Hamilton and Toronto.



OUR MISSION

HELPING PEOPLE CONNECT WITH GOD AND EACH OTHER

The driving force of New Hope is helping people connect with God and each other. We are the first to admit that we don't have everything figured out, but our goal is to be a community who have a whole-hearted passion for Jesus and are intentionally living out His word in an authentic way.

WHAT WE BELIEVE

ABOUT THE BIBLE

We believe that the Bible is the inspired Word of God, infallible and authoritative in all matters of faith and practice.

ABOUT GOD

We believe in one God who exists eternally in three persons: the Father, the Son, and the Holy Spirit.

ABOUT JESUS

We believe Jesus Christ to be the eternal Son of God who died for the sins of the world, rose from the dead, and ascended to the Father.

ABOUT THE HOLY SPIRIT

We believe the Holy Spirit indwells every believer, leading us into truth, convicting us of sin, and empowering us for service.

ABOUT HUMANKIND

We believe that people are created in the image of God, but fell through sin, incurring both spiritual and physical death.

ABOUT SALVATION

We believe salvation has been provided for all people through Christ's sacrifice on the cross. Those who repent and believe in Christ are born again and receive eternal life.

ABOUT THE CHURCH

We believe in the universal church which is the Body of Christ, whose purpose is to glorify God and share the Gospel with the world.

ABOUT ETERNITY

We believe there will be a final judgment where each person's eternal destination of heaven or hell will be determined by their response to Jesus Christ.

OUR DISTINCTIVES

- We are a healthy church that has been blessed by the long tenure of our founding pastor Greg Wyton and are expectant about the person God has to lead us into the future.
- We are a church that desires to take the message across the street and around the world.
- We encourage and value community and generosity.
- We have a great, debt-free facility located in Southwest London.
- We have a unified and committed board ready to support our next pastor.
- We have a founding pastor whose deepest heart's desire is to see New Hope flourish moving forward. He is willing to help in any regard as the new pastor directs.
- We are member church of the PAOC.
- We have a significant focus on missions beyond our local church demonstrated by giving more than 20% of our income to mission outreach.

SOME HELPFUL INFORMATION ABOUT US

- 700 people identify New Hope as their home church
- Annual budget - \$1.2 million
- Facility – 28k square feet and well maintained with no mortgage
- Auditorium – theatre seating for 530
- Financially – very stable with no debt and strong ministry reserves
- Staff team – 3 full-time and 7 part-time
- Outreach – 20% of budget is spent beyond our doors
- Technology – ahead of the curve in sound, lighting and production
- Greg Wyton founded the church in 1992



DOES THIS SOUND LIKE YOU?

YOU ARE A RELEVANT AND EFFECTIVE BIBLE TEACHER.

Your desire is for the word of God to be communicated with both biblical depth and strong application. You feel compelled to teach the full counsel of God's word. At the same time, you communicate in relatable ways while maintaining the centrality of the biblical text for faith and practice.

YOUR LEADERSHIP IS COMMITTED TO BUILDING THE KINGDOM BY BUILDING DISCIPLES.

Your leadership approach flows out of an ever-growing and deepening relationship with Christ which is readily evident to those around you. Your faith journey has demonstrated ongoing kingdom fruit in disciple making.

YOU DESIRE TO LEAD YOUR CHURCH IN STRATEGIC OUTREACH AND EVANGELISM, GROWING A CHURCH THAT REFLECTS THE CULTURE AROUND US.

You believe that ministry takes place both within the church and within the community. You are desirous to lead the church in reaching those far from God in the ever-growing, new community around our church.

YOU ARE A PERSON WHO OTHERS CONSIDER, PRAYERFUL, STEADFAST, AND WISE.

You serve the Lord by serving others in a manner that reflects your communion with Christ. Your Christ-like character is core to your leadership.

YOU ARE LOOKING AT BUILDING A CHURCH COMMUNITY THAT YOU AND YOUR FAMILY WILL LOVE TO CALL HOME.

You want to invest your life in a community with a lengthy tenure and journey with us through the seasons of our lives. You love a church that represents and ministers to all stages of life.

YOU WILL HELP OTHERS FIND THEIR KINGDOM BUILDING ROLE.

At New Hope we feel it is best if everyone is in a group and on a team. This allows you connectedness to God and each other through both relationships and active serving.



CORE RESPONSIBILITIES

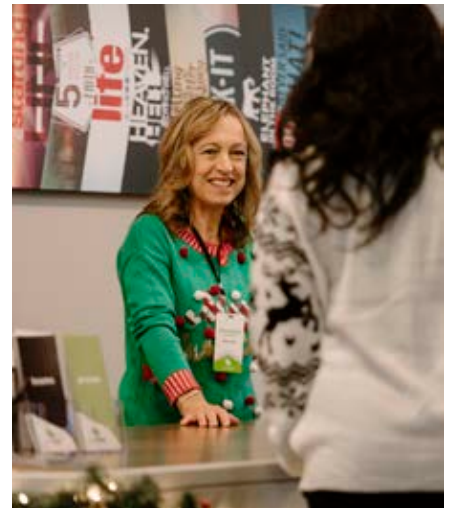
You will...

- Be the primary Sunday communicator.
- Collaborate with, encourage, and equip our staff team.
- Live as part of the New Hope community and care for God's people.
- Be an example of discipleship and service in the church community.
- Provide environments and opportunities for prayer and worship.



EXPECTATIONS AND OUTCOMES

- An unwavering commitment to the Word of God demonstrated by courageous and inspiring teaching.
- Be effective in reaching the target demographic of 20 to 40 years old.
- A unified, effective and increased staff team.
- Continued growth in community and relationships in an intergenerational congregation.
- A continued commitment to outreach and engagement in our wider neighbourhood.



WHAT YOU WOULD BRING TO NEW HOPE CHURCH

PERSONAL CHARACTERISTICS

- A humble, accessible and approachable leader.
- A caring, equipping and encouraging shepherd of our staff.
- A leader who is outgoing, people-oriented and persuasive.
- A motivating and enthusiastic team builder.
- A leader who is engaging and authentic.
- A person who is passionate about God

MINISTRY SKILLS

- An obvious gifting in preaching and teaching the Word in a manner that is biblically faithful, engaging and immediately applicable.
- An ability to encourage and equip our diverse, intergenerational congregation.
- A capacity to call others to join in the journey God has us on.
- An ability to cultivate a disciple making culture and movement.

EXPERIENCE AND EDUCATION

- Formal Theological Training with a Masters preferred.
- 5 years of experience in a similar role/setting.

QUALIFICATIONS

- 1) An ever-deepening love for the Lord Jesus and His Church
- 2) Alignment with our statement of faith and our expression of it.
- 3) Formal Theological Training with Masters preferred.
- 4) The ability to work in Canada.
- 5) A minimum of 5 years of lead pastor experience or equivalent.
- 6) Strong leadership, staff development and interpersonal skills.
- 7) Ordained in the PAOC or prepared to do so.
- 8) A motivating and inspiring staff and volunteer team builder.
- 9) A Spirit led and prayer centred ministry posture.
- 10) A willingness to complete a Predictive Index and APEST Profile.

SEARCH DETAILS

Steve Adams of Adams and Co. has been engaged to serve alongside the Leadership Team at New Hope Community Church in their lead pastor search.

Steve has over 30 years of local church leadership experience. Most recently he spent 12 years as lead pastor of one of the largest multi-site churches in his denomination with a staff of 25. Further he has led parachurch organizations both in the US and Canada and has also launched 2 non-profit organizations. Steve is also a continually active leadership consultant working with churches across Canada. He specializes in pastoral placements based on comprehensive church assessments and leadership coaching for pastors and church boards.

HAVE INTEREST?

If you sense interest in this role and would like to have a CONFIDENTIAL conversation with Steve regarding it, he welcomes your call at 519-635-6777.

You may also submit your inquiries to steve@adamsandco.org

Further he can be reached by email at steve@adamsandco.org

SEARCH TIMELINE

We will be receiving inquiries and applications until **May 11, 2025**.



Steve Adams